

Our Ref: KMG:640026

28 February 2017

**Private & Confidential**

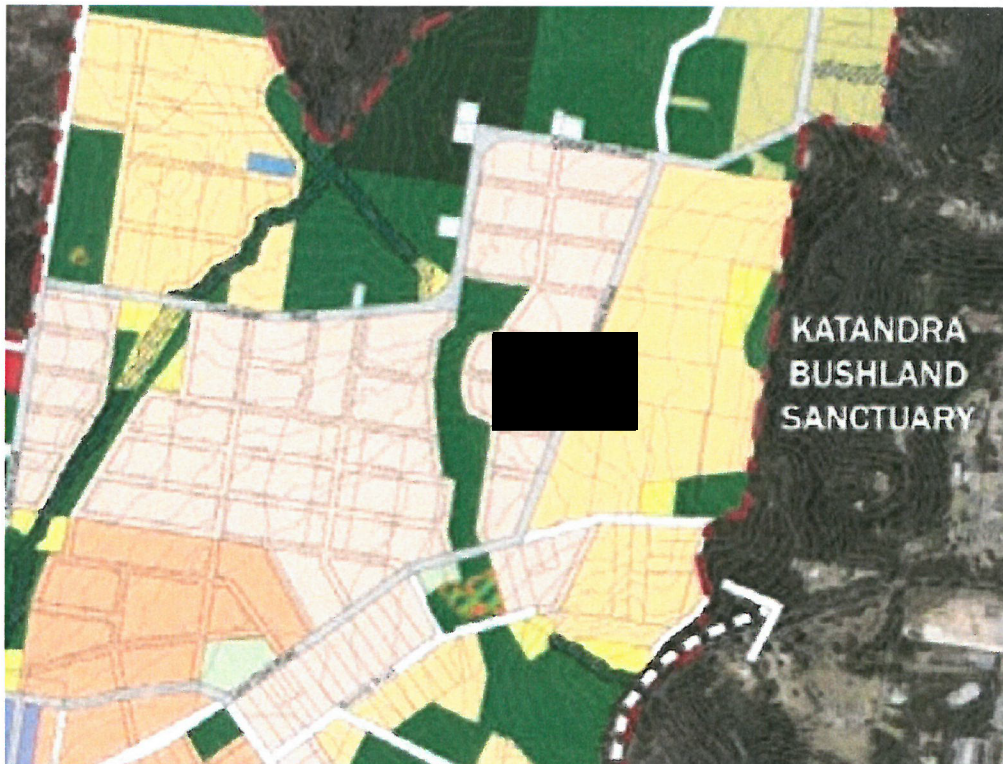
Department of Planning and Environment  
Level 22, 320 Pitt Street  
SYDNEY NSW 2000

Dear Sir/Madam

**Objection to Draft Structure Plan - The Ingleside Project**

We act for owners of Lots [REDACTED] being numbers [REDACTED] Walter Road, Ingleside respectively.

We submit this letter by way of objection to the draft Ingleside Precinct Structure Plan and in particular, to the mapped Environmental Conservation corridor along the western boundary of the above properties as shown in Figure 1.



**Figure 1.**

Adelaide  
Alice Springs  
Brisbane  
Canberra  
Darwin  
Hobart  
Melbourne  
Norwest  
Perth  
Sydney

Doc ID 402392493/v1

Level 14, Australia Square, 264-278 George Street, Sydney NSW 2000 Australia  
GPO Box 5408, Sydney NSW 2001 Australia  
DX 129 Sydney

Telephone +61 2 9334 8555  
Facsimile 1300 369 656 (Australia) +61 2 8507 6584 (International)  
hwlebsworth.com.au

ABN 37 246 549 189

We understand that the Structure Plan was informed by the draft technical studies, including the Draft Biodiversity Assessment Report prepared by Ecological Australia (**Biodiversity Report**).

Figure 32 in the Biodiversity Report maps ecological Corridor No. 5 as running along the western boundary of our clients' properties connecting the Kur-ring-gai Chase National Park to the north with the Katandra Bushland Sanctuary to the east.

Table 14 in the Biodiversity Report contains the following comment for Corridor No. 5:

*'The Draft Structure proposes to deliver an additional ecological corridor connection via Environmental Conservation to provide additional ecological connectivity. This corridor includes an area of Coastal Upland Swamps EEC, and will help to facilitate ecological connectivity. Revegetation of some lands north of Lane Cove Road will be required to make this corridor functional from an ecological perspective.'*

Figure 33 in the Biodiversity Report shows the area of mapped corridor as proposed Environmental Conservation (E2) to facilitate ecological connectivity. Corridor No. 5 is shown in Figure 33 as connected by proposed culverts for fauna crossing at the southernmost bend of Cicada Glen Road and at Lane Cove Road, near its intersection with Walter Road.

In our view, the mapped location of Corridor No. 5 is not supported by the ecological evidence presented in the draft technical studies. Despite the comment in Table 14, the only area of Coastal Upland Swamp mapped along Corridor No. 5 is located south of the Lane Cove Road, at a significant distance from our clients' properties and fragmented by the present condition of the land that has been cleared in parts for private use.

We note the comments at the top of page 66 of the Biodiversity Report to the effect that Pittwater Council, as it then was, supplied Ecological Australia with a GIS layer of the wildlife corridor (Figure 26) without supporting documentation in circumstances where it was unclear whether any field validation was conducted, particularly over private lands.

The third paragraph on page 66 of the Biodiversity Report states [in relation to the Pittwater Council's wildlife corridor mapping]:

*'The wildlife corridor mapping has identified fragmented vegetation and often privately owned lands adjoining Mona Vale Road, as well as between Cicada Glen Road in the north to Mona Vale Road in the south and Monash Golf Course, as part of the corridors. These areas are likely to provide limited current connectivity, and would require substantial restoration works to function effectively as linkages for a wide suite of fauna species.'*

Significantly, Ecological Australia's own wildlife corridor mapping (Figure 27) which was based on a combination of field study and desktop assessment, did not map a wildlife corridor in the location of Corridor No. 5.

Figure 27 is extracted below.





Yours faithfully

A handwritten signature in black ink, appearing to read 'Kirston Gerathy', with a stylized flourish at the end.

**Kirston Gerathy**  
Partner  
HWL Ebsworth Lawyers

+61 2 9334 8628  
kgerathy@hwle.com.au

**Adam Stipcevic**  
Solicitor  
HWL Ebsworth Lawyers

+61 2 9334 8748  
astipcevic@hwle.com.au